

ISSN 2518-1726 (Online),  
ISSN 1991-346X (Print)

ҚАЗАҚСТАН РЕСПУБЛИКАСЫ  
ҰЛТТЫҚ ҒЫЛЫМ АКАДЕМИЯСЫНЫҢ  
Әль-фараби атындағы Қазақ ұлттық университетінің

# Х А Б А Р Л А Р Ы

---

---

## ИЗВЕСТИЯ

НАЦИОНАЛЬНОЙ АКАДЕМИИ НАУК  
РЕСПУБЛИКИ КАЗАХСТАН  
Қазақстан Республикасының  
Ғылым Академиясының  
Әль-Фараби атындағы  
Қазақ ұлттық университетінің

## NEWS

OF THE NATIONAL ACADEMY OF SCIENCES  
OF THE REPUBLIC OF KAZAKHSTAN  
Al-farabi kazakh  
national university

**SERIES**  
**PHYSICO-MATHEMATICAL**

**4 (326)**

**JULY-AUGUST 2019**

PUBLISHED SINCE JANUARY 1963

PUBLISHED 6 TIMES A YEAR

ALMATY, KAZAKHSTAN

Б а с р е д а к т о р ы  
ф.-м.ғ.д., проф., ҚР ҰҒА академигі **Ғ.М. Мұтанов**

Р е д а к ц и я а л қ а с ы:

**Жұмаділдаев А.С.** проф., академик (Қазақстан)  
**Кальменов Т.Ш.** проф., академик (Қазақстан)  
**Жантаев Ж.Ш.** проф., корр.-мүшесі (Қазақстан)  
**Өмірбаев У.У.** проф. корр.-мүшесі (Қазақстан)  
**Жүсіпов М.А.** проф. (Қазақстан)  
**Жұмабаев Д.С.** проф. (Қазақстан)  
**Асанова А.Т.** проф. (Қазақстан)  
**Бошқаев К.А.** PhD докторы (Қазақстан)  
**Сұраған Д.** корр.-мүшесі (Қазақстан)  
**Quevedo Hernando** проф. (Мексика),  
**Джунушалиев В.Д.** проф. (Қырғыстан)  
**Вишневский И.Н.** проф., академик (Украина)  
**Ковалев А.М.** проф., академик (Украина)  
**Михалевич А.А.** проф., академик (Белорус)  
**Пашаев А.** проф., академик (Әзірбайжан)  
**Такибаев Н.Ж.** проф., академик (Қазақстан), бас ред. орынбасары  
**Тигиняну И.** проф., академик (Молдова)

«ҚР ҰҒА Хабарлары. Физика-математикалық сериясы».

ISSN 2518-1726 (Online), ISSN 1991-346X (Print)

Меншіктенуші: «Қазақстан Республикасының Ұлттық ғылым академиясы» РҚБ (Алматы қ.)  
Қазақстан республикасының Мәдениет пен ақпарат министрлігінің Ақпарат және мұрағат комитетінде  
01.06.2006 ж. берілген №5543-Ж мерзімдік басылым тіркеуіне қойылу туралы куәлік

Мерзімділігі: жылына 6 рет.  
Тиражы: 300 дана.

Редакцияның мекенжайы: 050010, Алматы қ., Шевченко көш., 28, 219 бөл., 220, тел.: 272-13-19, 272-13-18,  
<http://physics-mathematics.kz/index.php/en/archive>

---

© Қазақстан Республикасының Ұлттық ғылым академиясы, 2019

Типографияның мекенжайы: «Аруна» ЖК, Алматы қ., Муратбаева көш., 75.

Главный редактор  
д.ф.-м.н., проф. академик НАН РК **Г.М. Мутанов**

Редакционная коллегия:

**Джумадильдаев А.С.** проф., академик (Казахстан)  
**Кальменов Т.Ш.** проф., академик (Казахстан)  
**Жантаев Ж.Ш.** проф., чл.-корр. (Казахстан)  
**Умирбаев У.У.** проф. чл.-корр. (Казахстан)  
**Жусупов М.А.** проф. (Казахстан)  
**Джумабаев Д.С.** проф. (Казахстан)  
**Асанова А.Т.** проф. (Казахстан)  
**Бошкаев К.А.** доктор PhD (Казахстан)  
**Сураган Д.** чл.-корр. (Казахстан)  
**Quevedo Hernando** проф. (Мексика),  
**Джунушалиев В.Д.** проф. (Кыргызстан)  
**Вишневский И.Н.** проф., академик (Украина)  
**Ковалев А.М.** проф., академик (Украина)  
**Михалевич А.А.** проф., академик (Беларусь)  
**Пашаев А.** проф., академик (Азербайджан)  
**Такибаев Н.Ж.** проф., академик (Казахстан), зам. гл. ред.  
**Тигиняну И.** проф., академик (Молдова)

«Известия НАН РК. Серия физико-математическая».

ISSN 2518-1726 (Online), ISSN 1991-346X (Print)

Собственник: РОО «Национальная академия наук Республики Казахстан» (г. Алматы)

Свидетельство о постановке на учет периодического печатного издания в Комитете информации и архивов  
Министерства культуры и информации Республики Казахстан №5543-Ж, выданное 01.06.2006 г.

Периодичность: 6 раз в год.

Тираж: 300 экземпляров.

Адрес редакции: 050010, г. Алматы, ул. Шевченко, 28, ком. 219, 220, тел.: 272-13-19, 272-13-18,  
<http://physics-mathematics.kz/index.php/en/archive>

---

© Национальная академия наук Республики Казахстан, 2019

Адрес типографии: ИП «Аруна», г. Алматы, ул. Муратбаева, 75.

E d i t o r i n c h i e f  
doctor of physics and mathematics, professor, academician of NAS RK **G.M. Mutanov**

E d i t o r i a l b o a r d:

**Dzhumadildayev A.S.** prof., academician (Kazakhstan)  
**Kalmenov T.Sh.** prof., academician (Kazakhstan)  
**Zhantayev Zh.Sh.** prof., corr. member. (Kazakhstan)  
**Umirbayev U.U.** prof. corr. member. (Kazakhstan)  
**Zhusupov M.A.** prof. (Kazakhstan)  
**Dzhumabayev D.S.** prof. (Kazakhstan)  
**Asanova A.T.** prof. (Kazakhstan)  
**Boshkayev K.A.** PhD (Kazakhstan)  
**Suragan D.** corr. member. (Kazakhstan)  
**Quevedo Hernando** prof. (Mexico),  
**Dzhunushaliyev V.D.** prof. (Kyrgyzstan)  
**Vishnevskiy I.N.** prof., academician (Ukraine)  
**Kovalev A.M.** prof., academician (Ukraine)  
**Mikhalevich A.A.** prof., academician (Belarus)  
**Pashayev A.** prof., academician (Azerbaijan)  
**Takibayev N.Zh.** prof., academician (Kazakhstan), deputy editor in chief.  
**Tiginyanu I.** prof., academician (Moldova)

**News of the National Academy of Sciences of the Republic of Kazakhstan. Physical-mathematical series.**

**ISSN 2518-1726 (Online), ISSN 1991-346X (Print)**

Owner: RPA "National Academy of Sciences of the Republic of Kazakhstan" (Almaty)

The certificate of registration of a periodic printed publication in the Committee of information and archives of the Ministry of culture and information of the Republic of Kazakhstan N 5543-Ж, issued 01.06.2006

Periodicity: 6 times a year

Circulation: 300 copies

Editorial address: 28, Shevchenko str., of. 219, 220, Almaty, 050010, tel. 272-13-19, 272-13-18,  
<http://physics-mathematics.kz/index.php/en/archive>

---

© National Academy of Sciences of the Republic of Kazakhstan, 2019

Address of printing house: ST "Aruna", 75, Muratbayev str, Almaty

**NEWS**

OF THE NATIONAL ACADEMY OF SCIENCES OF THE REPUBLIC OF KAZAKHSTAN  
**PHYSICO-MATHEMATICAL SERIES**

ISSN 1991-346X

<https://doi.org/10.32014/2019.2518-1726.52>

Volume 4, Number 326 (2019), 135 – 142

UDC 004.9:519

IRSTI 20.53.00

**M. Kalimoldayev, M. Akhmetzhanov, M. Kunelbayev**

Institute Information and Computational Technologies CS MES RK,  
Almaty, Republic of Kazakhstan

## **DEVELOPMENT AND RESEARCH OF A MATHEMATICAL MODEL OF A SOLAR PHOTO CONVERTER WITH AN INVERTER FOR CONVERTING DIRECT CURRENT TO ALTERNATING VOLTAGE**

**Abstract.** This article presents a mathematical model of photovoltaic systems. For the analysis of energy processes in autonomous power transmission systems, it is now advisable to use computer simulation methods. The use of a simulation model makes it possible to provide an energy balance in an autonomous power transmission system with specific energy characteristics of ground and buffer sources of energy and a time scale from the power consumption of the load. This allows you to influence the energy characteristics of transmission systems to ensure the energy balance in the system in terms of temporary changes in the energy characteristics of energy sources, as well as the impact on the energy characteristics of the systems of transmission parameters such as solar energy, lighting, temperature, time of year, etc. This model is described by the current-voltage characteristic (CVC) at a given temperature, and the lighting conditions are the basis for calculating the parameters of the photoelectric energy in a wok. A new inverter was also designed and researched to convert direct current into alternating voltage, which allowed saving from 18.5% to 35.19% of expensive solar photo converters.

**Keywords:** solar cell; the current-voltage characteristics; mathematical model; MatLab.

### **1.Introduction**

Solar cells in the production of electricity from renewable energy sources, is now developing rapidly and soon will be increased overall use [1]. For example, small solar cells used in watches, calculators, small toys, radios and portable TVs. While large objects are combined into modules and are used to supply the power system [2,3].

A solar cell is an electrical device that converts light energy into electricity using the photoelectric effect. The main material used for the production of solar cells is silicon.

I. The design and manufacture of silicon solar battery Large blocks of molten silicon carefully cooled and solidified is made from cast ingots of polycrystalline silicon square. Polycrystalline silicon is less costly than single crystal and are less effective [4,3,5]. Solar battery consists of the following elements [6,7,8].

- Silicon wafer (mono- or polycrystalline) with a p-n junctions on the surface.
- Front and back contact; front contact must have the correct shape to make the most of the incident radiation.
- Antireflection layer - cover the front surface. There are three major types of solar cells.
- Single crystal formed on a silicon crystal with a homogeneous structure. The basis for the formation of cells that are suitable silicon-sized blocks.
- They are cut into plates whose thickness is about 0.3 mm. Photovoltaic cells achieve the highest levels of performance and life [4,6].
- Polycrystalline are comprised of many small grains of silicon. These solar cells are less efficient than single crystal. The production process is simpler and have lower rates [4,6].

- Amorphous (thin film) - produced by incorporating multiple layers of silicon on the surface of another material, such as glass. In these solar batteries, we can not distinguish individual cells. Amorphous solar cells are generally used in small devices such as calculators and watches [4,6,9,10]. As the metal contacts are made, the solar cells are interconnected by flat wires or metal ribbons, and assembled into modules or solar panels [7,11,12]. If the lower flow resistance of the current, the output current is a multiple of the current cell panel and associated with parallel connections of elements and modules. Similarly, the output voltage of the module depends on the amount series-connected cells and modules [3,13]. Photovoltaic solar cell generates electricity only when it is illuminated, electricity is not stored [13].

The current-voltage characteristics of the cell are shown the output current PV generator, depending on the voltage at the set temperature and lighting [2,14]. Short circuit current (ISC) - the output current of the photoelectric. Generative at a given temperature and irradiance, PMPP - point MPP (Maximum Power Point) is [2,6,15]. The output voltage is heavily dependent on the temperature of solar cells: increase results in a lower operating temperature and efficiency of [2,9].

The inverter is an inevitable component of the photovoltaic module.

There are many inverters available on the market. The cost of these inverters is a bit high due to the microcontroller-based SPWM generator [17,18,19]. In the article [20], researchers devoted to the design and construction of an inverter with a power of 100 W, 220 V and 50 Hz. The system is designed without a microcontroller and it has a cost-effective design architecture. The elementary purpose of this device is the conversion of 12 V DC to 220 V AC.

Solar Photovoltaic Modules (SPM) are popular in agriculture. For a lot of small farms, the main source of electrical energy is electric generators driven by Internal Combustion Engines (ICE), since installation of electrical networks is economically unprofitable. In these conditions, SPM are economically and environmentally promising, since it does not require the consumption of fuels and lubricants does not harm the environment. Determination of the main SPM operating parameters in 2 modes is considered in this research. In the cases when the panels oriented towards the sun (tracking mode) and in a stationary state with orientation to the south (without tracking mode). The dependences of current, voltage and power on time and density of solar radiation were measured. Accordingly, the voltage and current of Transportable Photovoltaic Unit (TPU), the charging current and the voltage of the batteries, the voltage at the output of the inverter, the temperature and humidity of the outside air and the electrical energy consumption by the electric receivers were recorded. The study of the TPU operation showed that the mode of orientation to the sun increases the daytime power generation by 25, ..., 33% in comparison with the fixed installation of Solar Panels (SP). The analysis showed the discrepancy between SP passport data and the experimental results. The decrease in electricity generation was 14% compared to the expected estimates [21]. The advent of unique technologies of the developing Solar Energy (SE), actual energy, faces economic and environmental problems. The main obstacle to the widespread use of SE is the low value of the average annual efficiency of known solar installations. In a sharply continental climate, they are exploited only in the warm season, about 6-7 months. Known combined systems, where additional conventional water heaters duplicate the operation of solar units, require additional costs for energy carriers. These disadvantages are not offered by the integrated system of SE use. In the article, the system was studied using the example of a cattle-breeding farm. The new system performs these functions; it recycles heat, organizes their movement and accumulation, and smooths out the uneven SE. The main components of the system are: Solar Power Plant (SPP), milk cooler, climate unit, Heat Pump (HP), the battery heat, automatic control system, and device heating and hot water. The main goal, i.e. lower cost of the energy produced and the elimination of the uneven SE, compared to the known SPP, is achieved through the flow of energy from the sources mentioned above [22].

## **2. Model Solar Battery**

Photovoltaic generators for direct conversion of solar radiation into electrical energy, collected from a large number of series-connected photovoltaic solar cells (solar cells), are called solar cells (SC). Modern Security generate significant light on electrical power and are used both for power spacecraft (SC), and for many terrestrial autonomous devices for different purposes. Solar panels are made up of tens or hundreds of thousands of individual solar cells connected in parallel, in series in order to provide the required voltage and current ratings.

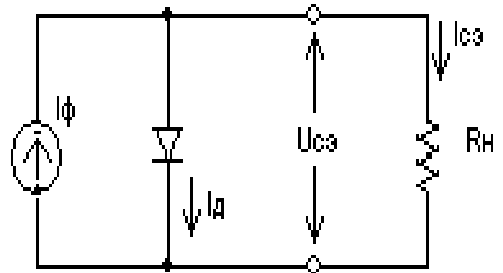


Figure 1 - Equivalent circuit of a solar cell

Figure 1 shows an equivalent circuit of the solar cell of substitution (SE). It is described by the following expression [16]:

$$I_{NY} = I_0(W) - I_0 \cdot \left[ \exp \frac{qU_{NY}}{kT} - 1 \right] \leftrightarrow U_{NY} = \frac{kT}{q} \ln \left[ \frac{I_0(W) - I_{NY}}{I_0} + 1 \right] \quad (1)$$

Where  $I_{NY}$  - current through an external load,  $I_0$  - reverse saturation current,  $q$  - electron charge,  $T$  - the absolute temperature, ° K,  $k$  - is Boltzmann's constant,  $U_{NY}$ - voltage at the output element,  $I_0$  - current of minority carriers generated by the light (photocurrent).

Influence of irradiance on the FE value  $U_{NY}$  value expressed by the formula [13].

$$I_0(W) = W \cdot I_0 \quad (2)$$

where  $W$  - Illumination SE.



Figure 2 - The full-scale model of the solar panels

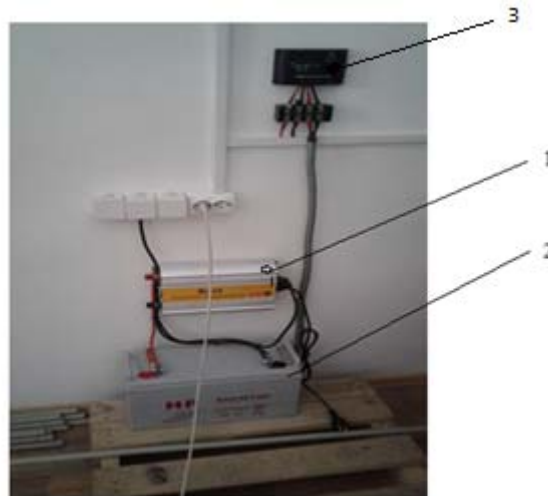


Fig. 3. The solar power systems:  
1-inverter; 2- battery;3-controller

### 3. Inverter to convert DC to AC voltage

The objective of this study is to reduce the load on the power supply with maximum efficiency and increase the term of stability, simplify the design of the device, reduce the cost and expand the scope of their use in industry.

This task is achieved by the fact that when turning on the PWM controller that regulates the width of the pulses 1 to the logic elements 3, 4, the maximum sequence of gates of field-effect transistors is achieved.

As shown in Figure 1, the device has a PWM controller that regulates pulse width 1, voltage regulator 2, with field-effect transistors connected 3,4, to convert from DC to AC, capacitors 5, to filter the input voltage, diode bridge 6, transformer consisting of primary and secondary windings 7, switch 8, housing 9, you can use any material, plastic, iron, aluminum.

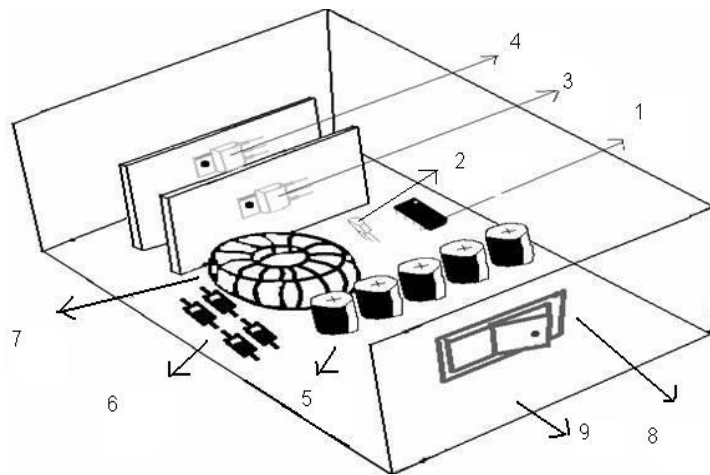


Figure 4 - Inverter to convert DC voltage to AC

Assembly and manufacture of the device is as follows. A PWM controller regulating pulse width 1 is connected via voltage regulator 2, and capacitors 5, for filtering and limiting the input voltage, followed by connecting field-effect transistors 3, 4, screwed to passive cooling, to prevent heating, and with parallel connection of the secondary winding transformer 7, the primary winding is connected directly to the diode bridge 6, with the connection to the input voltage circuit of the switch 8, with the subsequent location in the housing 9.

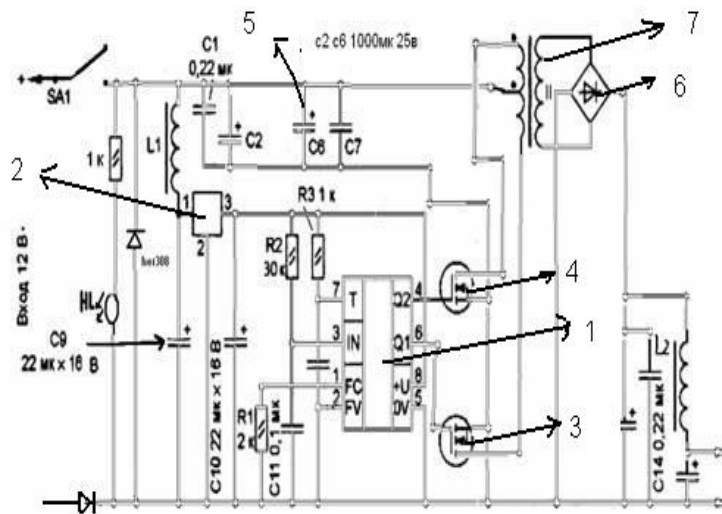
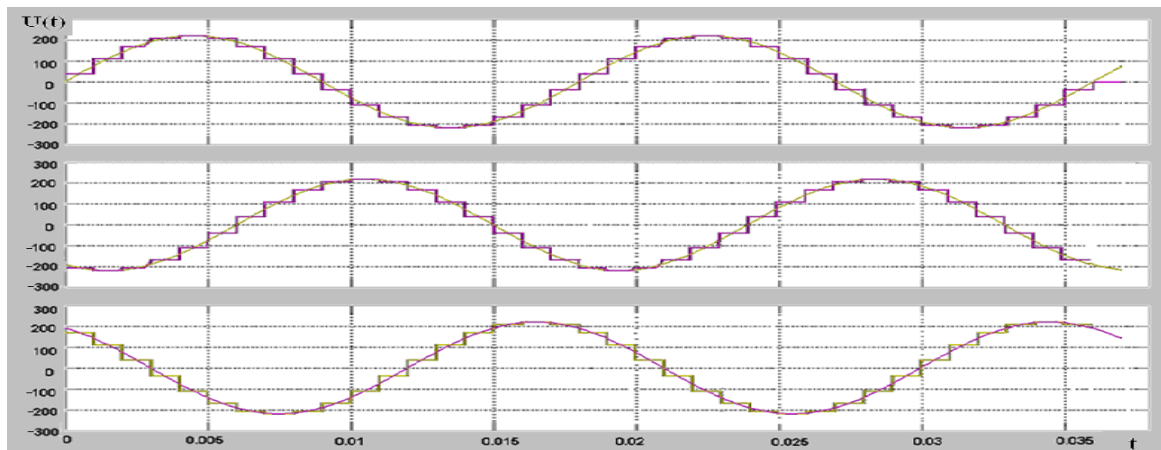


Figure 5 Schematic diagram of the inverter



The operation of the proposed device is as follows. When the input voltage is connected, with the switch 8 connected to the input voltage circuit, the current is fed to the PWM controller that controls the pulse width 1, through the capacitors 5, to filter the current, and the voltage regulator 2, then connect the field-effect transistors 3, 4 screwed to the passive cooling, to prevent heating, and with the parallel connection of the secondary winding of the transformer 7, the primary winding is connected directly to the diode bridge 6, with the connection to the input voltage circuit of the switch 8, followed by p As position in the housing 9.

According to the developed method of rational use of solar photo converters, calculations were carried out for a three-phase conversion system for various inversion schemes. According to calculations, it was found that with a three-phase conversion system, it is possible to save from 18.5% to 35.19% of expensive solar photo converters.



1- Output step voltage curve; 2- perfect sine curve

Figure 6 - The output voltage of a three-phase five-step model

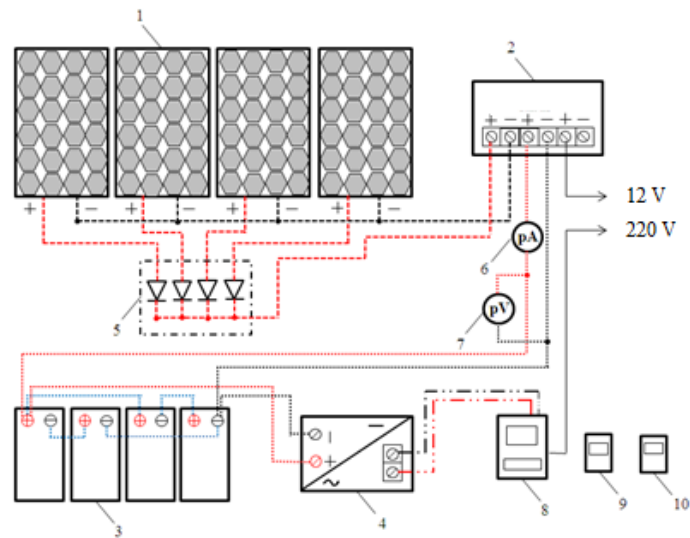
In accordance with the graphical analysis, it can be asserted that with a three-phase load, as the steps grow, a voltage curve can be obtained that is close to a sinusoid.

**4. Result**

During the research, the following are recorded: the voltage and current of the FCM, the charging current and the voltage on the batteries, the voltage at the output of the inverter, the temperature of the outside air (from +5 to +35 0C) and the humidity of the outside air, and the electric power consumption of the electric receivers of the connected load.

In the experimental studies we used: a solar radiation meter SM-206, an ammeter and a DC voltmeter, a UT206 multimeter, a Saiman electric energy meter, a CENTER-350 infrared thermometer, and an MES-202 meteorometer. The measurement of solar radiation was carried out with a portable SM-206 instrument with an accuracy of ± 5% (measuring range 0.1 ... 399.9 W / m2, temperature - with an infrared thermometer CENTER-350 with an accuracy of ± 2% (measuring range -20 + 5000C) And the air humidity were measured with a psychrometer MV-4M with an error of ± 4% and a meteorometer MES-202, the limit of the permissible value of the absolute error of the pressure measurement is not more than ± 0,3 kPa in the temperature range from 0 to 60 0 C. Overall dimensions were measured with a tape measure of metal PM with an error ± 0.5 mm (measuring range 0 to 10m, the division price is 1mm) and a metal ruler (length 1m) with an error of ± 1mm.

The diagram of the connection of devices and equipment during laboratory-field testing is shown in Figure 1.



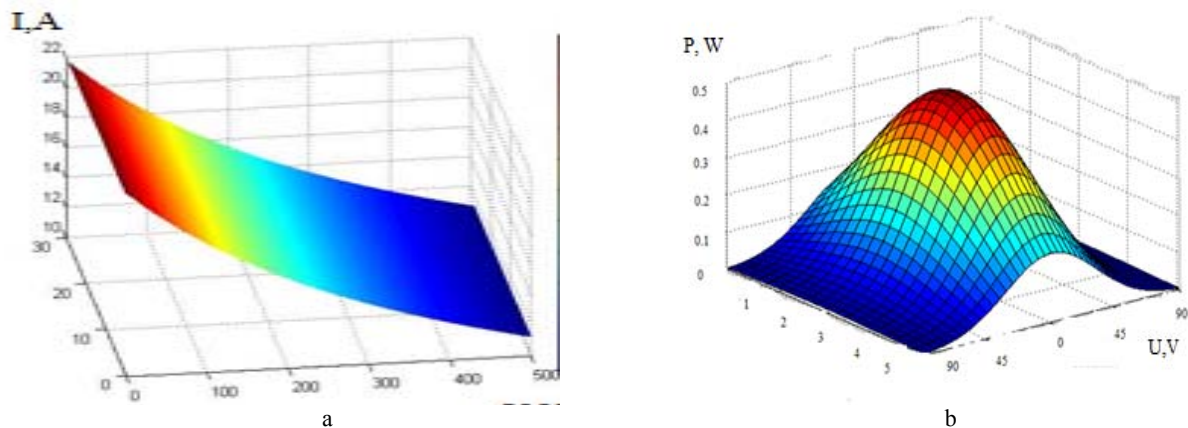
1-PV panel; 2- controller; 3- rechargeable battery; 4- inverter; 5- diodes; 6 - direct current ammeter; 7 - DC voltmeter; 8 - the counter of electric energy; 9 - solar radiation meter; 10 - a weather meter

Figure 7 - Scheme for mounting equipment and connecting devices

We are implementing the mathematical model of SE. As an example, we choose an SE with the following characteristics:

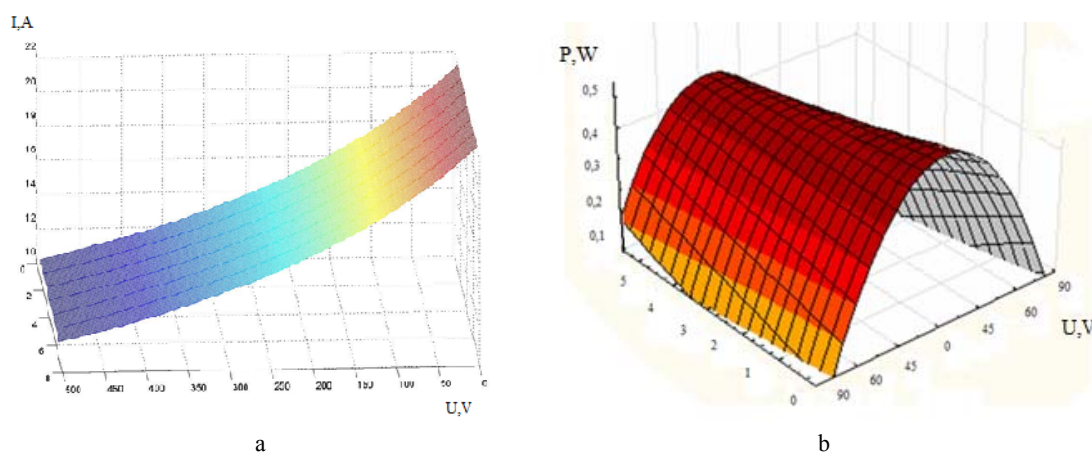
$$\begin{aligned} U_{xx} &= 0,45B, \\ I_{kz} &= 4,5A, \\ I_0 &= 2,045 \cdot 10^{-9}A \end{aligned}$$

The circuit that realizes the volt ampere characteristic of the solar cell described by the expression (1) is shown in Fig. 2. It allows one to estimate the influence on the operation of such parameters as the illumination level of the solar cell (nominal value  $W = 1360 \text{ kW} / \text{m}^2$ ), the ambient temperature (Nominal value  $K = 298 \text{ K}$ ), as well as the angle of incidence of the light flux (nominal value  $\alpha = 90^\circ = \pi / 2 \text{ rad}$ ).



a - current-voltage characteristic, b – volt watt characteristic  
Fig. 8. Characteristics of the SE, described by the equation (2)

We test the solar battery consisting of 3 elements connected in series. In this case, the voltage at the output of the  $U_{NA}$  SB is determined by the formula  $U_{NA} = U_{YEA} = U_{NY} \cdot N$ , where  $N$  is the number of solar cells connected in series  $I_{NA} = I_{YEA} = I_{NY}$ .



a - current-voltage characteristic, b – volt watt characteristic  
Figure 9 - Characteristics of the circuit shown in Figure 4

As can be seen from Fig. 9, the idling voltage of the SB is 3 times greater The open circuit voltage of the solar cell (see Figure 3) => the model is compiled correctly.

## V. CONCLUSION

Comparison with experimental data, processed by MATLAB, and with the characteristics of the PV panels, provided by manufacturers, has shown that the model implemented in MATLAB/Simulink can be an accurate tool for the prediction of energy production. A PV system model, using the same equations and parameters as in MATLAB/Simulink to define the PV module and characteristics, has also been developed and implemented in domestic consumers in agriculture to study load flow, steady-state voltage stability and dynamic behavior of a distributed power system. A comparison between both simulation models, implemented in MATLAB/Simulink and domestic consumers in agriculture, has shown a good similarity. That means that this work can be used for further development of tools for DER components in a distributed network. The developed mathematical model of the solar battery makes it possible to evaluate the influence on the characteristics of the SB both internal factors ( $U_{xx}, I_{KZ}$ ), and external ( $W, T, \alpha$ ). The model is designed for design of SES. The results of testing the model confirm its operability.

**М. Калимолдаев, М. Ахметжанов, М. Кунелбаев**

## ТҰРАҚТЫ ТОК АЙНЫМАЛЫ КЕРНЕУГЕ ТҮРЛЕНДІРУ ҮШІН ТҮРЛЕНДІРГІШТІКПЕН КҮН ФОТОЭЛЕМЕНТТЕРІНІҢ МАТЕМАТИКАЛЫҚ МОДЕЛІН ӘЗІРЛЕУ ЖӘНЕ ЗЕРТТЕУ

**Аннотация.** Бұл мақалада фотовольтаикалық жүйелердің математикалық моделі берілген. Дербес энергетикалық жүйелердегі энергетикалық процестерді талдау үшін компьютерлік модельдеу әдістерін қолдану ұсынылады. Модельдеу моделін пайдалану автономды электр энергиясын беру жүйесінде энергетикалық тепе-теңдік қамтамасыз етуге мүмкіндік береді және энергияның буферлік көздері мен жүктің энергияны тұтынуының уақытша шкаласы. Бұл қуат көздерінің энергетикалық сипаттамалары бойынша уақытша өзгерістерге байланысты жүйедегі энергия теңгерімін қамтамасыз ету үшін трансмиссиялық жүйелердің энергетикалық сипаттамаларына, сондай-ақ, трансформатор параметрлері жүйелерінің энергия сипаттамаларына әсері сияқты, күннің энергия, жарықтандыру, температура, жыл уақыты және т.б. Бұл модель берілген температурада ағымдағы кернеу сипаттамасымен (CVC) сипатталады, ал жарықтандыру жағдайлары фотоэлектрлік энергияның параметрлерін есептеу кезінде негіз болады. Сондай-ақ жаңа ток түрлендіргішті айнымалы кернеуге айналдыру үшін әзірленген және зерттелді, бұл 18,5% -дан 35,19% қымбат күн фотоэлементтерін үнемдеуге мүмкіндік берді.

**Түйін сөздер:** күн батареясы; ток кернеуінің сипаттамалары; математикалық модель; MatLab.

М. Калимолдаев, М. Ахметжанов, М. Кунелбаев

Институт информационных и вычислительных технологий КН МОН РК

**РАЗРАБОТКА И ИССЛЕДОВАНИЕ МАТЕМАТИЧЕСКОЙ МОДЕЛИ СОЛНЕЧНОГО  
ФОТОПРЕОБРАЗОВАТЕЛЯ С ИНВЕРТОРОМ ДЛЯ ПРЕОБРАЗОВАНИЯ  
ПОСТОЯННОГО ТОКА В ПЕРЕМЕННОЕ НАПРЯЖЕНИЕ**

**Аннотация.** В данной статье представлена математическая модель фотоэлектрических систем. Для анализа энергетических процессов в автономных системах электропередачи сейчас целесообразно использовать методы компьютерного моделирования. Использование имитационной модели позволяет обеспечить энергетический баланс в автономной системе передачи энергии с конкретными энергетическими характеристиками наземных и буферных источников энергии и шкалой времени от потребляемой мощности нагрузки. Это позволяет влиять на энергетические характеристики систем передачи, чтобы обеспечить энергетический баланс в системе с точки зрения временных изменений энергетических характеристик источников энергии, а также влияния на энергетические характеристики систем параметров передачи, таких как солнечная энергия, освещение, температура, время года и т. д. Эта модель описывается вольт-амперной характеристикой (CVC) при данной температуре, и условия освещения являются основой для расчета параметров фотоэлектрической энергии в вольте. Новый инвертор был также разработан и исследован для преобразования постоянного тока в переменное напряжение, что позволило сэкономить от 18,5% до 35,19% дорогих солнечных фотопреобразователей.

**Ключевые слова:** солнечный элемент; вольт-амперные характеристики; математическая модель; MatLab

**REFERENCE**

- [1] Fundamentals of Photovoltaics: <http://www.fotovoltaika.com.pl/podstawy.htm>
- [2] E. Klugmann-Radziemska, Photovoltaic, in theory and practice, Publishing House BTC, Legionowo, 2010 (in Polish).
- [3] Photovoltaics [http://www.acce.apsl.edu.pl/instrukcje/fotoogniwo\\_ogniwo%20sloneczne.pdf](http://www.acce.apsl.edu.pl/instrukcje/fotoogniwo_ogniwo%20sloneczne.pdf) (in Polish).
- [4] F. Wolanczyk, How to use the power of gifts, the solar collectors and photovoltaic cells, Publishing House KaBe, Krosno, 2011 (in Polish).
- [5] M. Lipinski, Silicon nitride for photovoltaic application, Archives of Materials Science and Engineering 46/2 (2010) 69-87.
- [6] T. Rodacki, A. Kandyba, Energy conversion in solar power, Wydaw. Politechniki Slaskiej, Gliwice, 2000 (in Polish).
- [7] L.A. Dobrzanski, M. Szindler, Sol-gel and ALD antireflection coatings for silicon solar cells, Electronics: structures, technologies, applications 53/8 (2012) 125-127.
- [8] T. Markvart, L. Castaner, Practical handbook of photovoltaics, fundamentals and applications, Oxford, Elsevier, 2006.
- [9] Thin film solar cell - [http://www.labfiz2p.if.pw.edu.pl/ins/cos\\_nr\\_9.pdf](http://www.labfiz2p.if.pw.edu.pl/ins/cos_nr_9.pdf) (in Polish).
- [10] R. Brendel, Thin-film crystalline silicon solar cells, physics and technology, Wiley-VCH, Weinheim, 2003.
- [11] P. Würfel, Physics of solar cells: from basic principles to advanced concepts, Wiley-VCH Verlag, Weinheim, 2009.
- [12] L.A. Dobrzanski, M. Musztyfaga, Effect of the front electrode metallisation process on electrical parameters of a silicon solar cell, Journal of Achievements in Materials and Manufacturing Engineering 48/2 (2011) 115-144.
- [13] M. Waclawek, T. Rodziewicz, Solar cells: the impact of the environment on their work, Publishing House WNT, Warsaw, 2011 (in Polish).
- [14] H.J. Moller, Photovoltaics - current status and perspectives, Environment Protection Engineering 32/1 (2006) 127-134.
- [15] L.A. Dobrzanski, M. Musztyfaga, Effect of the front electrode metallisation process on electrical parameters of a silicon solar cell, Journal of Achievements in Materials and Manufacturing Engineering 48 /2 (2011) 115-144.
- [16] L.A. Dobrzanski, M. Musztyfaga, A. Drygala, Final manufacturing process of front side metallisation on silicon solar cells using convectional and unconventional techniques, Journal of Mechanical Engineering 59 (2013) 3 175-182.
- [17] Rafid Haider, Rajin Alam, Nafisa Binte Yousuf, Khosru M. Salim, "Design and Construction of Single Phase Pure Sine Wave Inverter for Photovoltaic Application" IEEE/OSA/IAPR International Conference on Infonnatics, Electronics & Vision.
- [18] H. Dehbonei, L. J. Borle, "Design and implementation of a low cost sine Wave inverter," IEEE, 2003, pp. 280-285.
- [19] A. A. Qazalbash et al., "Design and implementation of microcontroller based PWM technique for sine wave inverter," IEEE POWERENG, Lisbon, Portugal, pp. 163- 167, March 2009.
- [20] Niaz Morshedul Haque, Ifthekhar Ahammad, Sayem Miah, Asad Ahmed Miki, Hasan Ahmed. International Journal Of Scientific & Technology Research Volume 6, Issue 10, October 2017, pp. 269-272.
- [21] Omarov, R., Keshuov, S., Omar, D., Kunelbayev, M., . Determination of basic operating parameters of Solar Photovoltaic modules for farms. Journal of Engineering and Applied Sciences 12(Specialissue1), 2017, pp. 5761-5766.
- [23] Omarov, R., Abdygaliyeva, S., Omar, D., Kunelbayev, M.. Integrated system for the use of solar energy in animal farm. *Scientia Iranica*, 2017, 24(6), pp. 3213-3222.

## **Publication Ethics and Publication Malpractice in the journals of the National Academy of Sciences of the Republic of Kazakhstan**

For information on Ethics in publishing and Ethical guidelines for journal publication see <http://www.elsevier.com/publishingethics> and <http://www.elsevier.com/journal-authors/ethics>.

Submission of an article to the National Academy of Sciences of the Republic of Kazakhstan implies that the described work has not been published previously (except in the form of an abstract or as part of a published lecture or academic thesis or as an electronic preprint, see <http://www.elsevier.com/postingpolicy>), that it is not under consideration for publication elsewhere, that its publication is approved by all authors and tacitly or explicitly by the responsible authorities where the work was carried out, and that, if accepted, it will not be published elsewhere in the same form, in English or in any other language, including electronically without the written consent of the copyright-holder. In particular, translations into English of papers already published in another language are not accepted.

No other forms of scientific misconduct are allowed, such as plagiarism, falsification, fraudulent data, incorrect interpretation of other works, incorrect citations, etc. The National Academy of Sciences of the Republic of Kazakhstan follows the Code of Conduct of the Committee on Publication Ethics (COPE), and follows the COPE Flowcharts for Resolving Cases of Suspected Misconduct ([http://publicationethics.org/files/u2/New\\_Code.pdf](http://publicationethics.org/files/u2/New_Code.pdf)). To verify originality, your article may be checked by the Cross Check originality detection service <http://www.elsevier.com/editors/plagdetect>.

The authors are obliged to participate in peer review process and be ready to provide corrections, clarifications, retractions and apologies when needed. All authors of a paper should have significantly contributed to the research.

The reviewers should provide objective judgments and should point out relevant published works which are not yet cited. Reviewed articles should be treated confidentially. The reviewers will be chosen in such a way that there is no conflict of interests with respect to the research, the authors and/or the research funders.

The editors have complete responsibility and authority to reject or accept a paper, and they will only accept a paper when reasonably certain. They will preserve anonymity of reviewers and promote publication of corrections, clarifications, retractions and apologies when needed. The acceptance of a paper automatically implies the copyright transfer to the National Academy of Sciences of the Republic of Kazakhstan.

The Editorial Board of the National Academy of Sciences of the Republic of Kazakhstan will monitor and safeguard publishing ethics.

Правила оформления статьи для публикации в журнале смотреть на сайтах:

[www:nauka-nanrk.kz](http://www.nauka-nanrk.kz)

<http://physics-mathematics.kz/index.php/en/archive>

**ISSN 2518-1726 (Online), ISSN 1991-346X (Print)**

Редакторы *М. С. Ахметова, Т.А. Апендиев, Д.С. Аленов*  
Верстка на компьютере *А.М. Кульгинбаевой*

Подписано в печать 10.08.2019.  
Формат 60x881/8. Бумага офсетная. Печать – ризограф.  
9,6 п.л. Тираж 300. Заказ 4.

---

*Национальная академия наук РК*  
050010, Алматы, ул. Шевченко, 28, т. 272-13-18, 272-13-19